

Test Report

No. BCTC-FYC170071329R

Date: Jul. 25, 2017

Page 1 of 15

Applicant : Shenzhen Luoxi Technology Co., Ltd.
Address : Floor 6, Building B, No. 172, Hangcheng Avenue, Xixiang Town, Bao'an District, Shenzhen City

The submitted sample and sample information was/were submitted and identified by/on the behalf of the client

Sample name : Car Bluetooth Player
Testing type /model : S-05
Additional type /model : S-06, S-07, S-08, S-09, S-10, S-11, S-12, S-13, S-16
Trademark : N/A
Manufacturer : Shenzhen Luoxi Technology Co., Ltd.
Address : Floor 6, Building B, No. 172, Hangcheng Avenue, Xixiang Town, Bao'an District, Shenzhen City
Sample received date : Jul. 19, 2017
Testing period : Jul. 19, 2017 - Jul. 25, 2017
Test requested : 1. As specified by client, to screen Lead(Pb), Cadmium(Cd), Mercury(Hg), Chromium(Cr) and Bromine(Br) in the submitted sample(s) by XRF.
2. As specified by client, when screening results exceed the XRF screening limit in IEC 62321-3-1:2013, further use of chemical methods are required to test the Lead(Pb), Cadmium(Cd), Mercury(Hg), Hexavalent Chromium(Cr(VI)), Polybrominated Biphenyls(PBBs), Polybrominated Diphenyl Ethers(PBDEs) in the submitted samples.

According to the RoHS Directive 2011/65/EU

*****For more detailed information, please refer to the next page*****

Tested by

Judy Zou



Approved by

Limhang

Lab: Shenzhen BCTC Testing Co., Ltd.

Add: BCTC Building & 1-2F, East of B Building, pengzhou Industrial, Fuyuan 1st Road, Qiaotou Community, Fuyong Street, Bao'an District, Shenzhen, China

Tel : (86) 0755-33229357 Fax : 0755-33229357



Hotline

400-788-9558

www.bctc-lab.com.cn

Test Report

No. BCTC-FYC170071329R

Date: Jul. 25, 2017

Page 2 of 15

Test Method:

A. Screening test by XRF spectroscopy

XRF screening limits in mg/kg for regulated elements according to IEC 62321-3-1:2013.

Element	Limit of IEC 62321-3-1:2013. Unit (mg/kg)		MDL	
	Polymers and metals	Composite material	Polymers	Other material
Pb	$BL \leq (700-3\sigma) < X < (1300+3\sigma)$ $\leq OL$	$BL \leq (500-3\sigma) < X < (1500+3\sigma)$ $\leq OL$	10 mg/kg	50 mg/kg
Cd	$BL \leq (70-3\sigma) < X < (130+3\sigma)$ $\leq OL$	$LOD \leq (50-3\sigma) < X < (150+3\sigma)$ $\leq OL$	10 mg/kg	50 mg/kg
Hg	$BL \leq (700-3\sigma) < X < (1300+3\sigma)$ $\leq OL$	$BL \leq (500-3\sigma) < X < (1500+3\sigma)$ $\leq OL$	10 mg/kg	50 mg/kg
Cr	$BL \leq (700-3\sigma) < X$	$BL \leq (500-3\sigma) < X$	10 mg/kg	50 mg/kg
Br	$BL \leq (300-3\sigma) < X$	$BL \leq (250-3\sigma) < X$	10 mg/kg	50 mg/kg

Note:

-BL = Under the XRF screening limit

-OL = Further chemical test will be conducted while result is above the screening limit

-X= The symbol "X" marks the region where further investigation is necessary

-3σ= The reproducibility of analytical instruments

-LOD= Detection limit


B. Chemical Test

Test Item(s)	Test Method	Measured Equipment(s)	MDL	Limit
Lead (Pb)	IEC 62321-5:2013 Ed.1.0	ICP-OES	2 mg/kg	1000 mg/kg
Cadmium (Cd)	IEC 62321-5:2013 Ed.1.0	ICP-OES	2 mg/kg	100 mg/kg
Mercury (Hg)	IEC 62321-4:2013 Ed.1.0	ICP-OES	2 mg/kg	1000 mg/kg
Hexavalent Chromium Cr(VI)	IEC 62321-7-1:2015 Ed.1.0	UV-VIS	/	1000 mg/kg
	IEC 62321-7-2:2017 Ed.1.0	UV-VIS	2 mg/kg	1000 mg/kg
Polybrominated Biphenyls (PBBs)	IEC 62321-6:2015 Ed.1.0	GC-MS	5 mg/kg	1000 mg/kg
Polybrominated Diphenyl Ethers (PBDEs)	IEC 62321-6:2015 Ed.1.0	GC-MS	5 mg/kg	1000 mg/kg

Lab: Shenzhen BCTC Testing Co., Ltd.

Add: BCTC Building & 1-2F, East of B Building, pengzhou Industrial, Fuyuan 1st Road, Qiaotou Community, Fuyong Street, Bao'an District, Shenzhen, China

Tel : (86) 0755-33229357 Fax : 0755-33229357


Hotline
400-788-9558
www.bctc-lab.com.cn

Test Report

No. BCTC-FYC170071329R

Date: Jul. 25, 2017

Page 3 of 15

Test Results:

Sample No.	Sample Description	Tested Items	XRF Screening Test Unit (mg/kg)	Chemical Test Unit (mg/kg)	Conclusion
1	Silver plastic	Pb	BL	/	PASS
		Cd	BL	/	
		Hg	BL	/	
		Cr(Cr(VI))	6578	N.D.	
		Br(PBBs&PBDEs)	BL	/	
2	Black plastic	Pb	BL	/	PASS
		Cd	BL	/	
		Hg	BL	/	
		Cr(Cr(VI))	BL	/	
		Br(PBBs&PBDEs)	BL	/	
3	Gray plastic	Pb	BL	/	PASS
		Cd	BL	/	
		Hg	BL	/	
		Cr(Cr(VI))	BL	/	
		Br(PBBs&PBDEs)	BL	/	
4	Black plastic	Pb	BL	/	PASS
		Cd	BL	/	
		Hg	BL	/	
		Cr(Cr(VI))	BL	/	
		Br(PBBs&PBDEs)	BL	/	
5	White plastic	Pb	BL	/	PASS
		Cd	BL	/	
		Hg	BL	/	
		Cr(Cr(VI))	BL	/	
		Br(PBBs&PBDEs)	BL	/	
6	Silver metal rod	Pb	BL	/	PASS
		Cd	BL	/	
		Hg	BL	/	
		Cr(Cr(VI))	67918	Negative	
		Br(PBBs&PBDEs)	/	/	

Lab: Shenzhen BCTC Testing Co., Ltd.

Add: BCTC Building & 1-2F, East of B Building, pengzhou Industrial, Fuyuan 1st Road, Qiaotou Community, Fuyong Street, Bao'an District, Shenzhen, China

Tel : (86) 0755-33229357 Fax : 0755-33229357


Hotline
400-788-9558
www.bctc-lab.com.cn

Test Report

No. BCTC-FYC170071329R

Date: Jul. 25, 2017

Page 4 of 15

7	Green wire core	Pb	BL	/	PASS
		Cd	BL	/	
		Hg	BL	/	
		Cr(Cr(VI))	BL	/	
		Br(PBBs&PBDEs)	BL	/	
8	Red wire core	Pb	BL	/	PASS
		Cd	BL	/	
		Hg	BL	/	
		Cr(Cr(VI))	BL	/	
		Br(PBBs&PBDEs)	/	/	
9	Black outside wire jacket	Pb	BL	/	PASS
		Cd	BL	/	
		Hg	BL	/	
		Cr(Cr(VI))	BL	/	
		Br(PBBs&PBDEs)	BL	/	
10	Gold wire core	Pb	BL	/	PASS
		Cd	BL	/	
		Hg	BL	/	
		Cr(Cr(VI))	BL	/	
		Br(PBBs&PBDEs)	/	/	
11	Silver metal sheet	Pb	BL	/	PASS
		Cd	BL	/	
		Hg	BL	/	
		Cr(Cr(VI))	BL	/	
		Br(PBBs&PBDEs)	/	/	
12	Black plastic paper	Pb	BL	/	PASS
		Cd	BL	/	
		Hg	BL	/	
		Cr(Cr(VI))	BL	/	
		Br(PBBs&PBDEs)	BL	/	
13	Aluminum shell	Pb	BL	/	PASS
		Cd	BL	/	
		Hg	BL	/	
		Cr(Cr(VI))	BL	/	
		Br(PBBs&PBDEs)	/	/	

Lab: Shenzhen BCTC Testing Co., Ltd.

Add: BCTC Building & 1-2F, East of B Building, pengzhou Industrial, Fuyuan 1st Road,
Qiaotou Community, Fuyong Street, Bao'an District, Shenzhen, China

Tel : (86) 0755-33229357 Fax : 0755-33229357


Hotline
400-788-9558
www.bctc-lab.com.cn

Test Report

No. BCTC-FYC170071329R

Date: Jul. 25, 2017

Page 5 of 15

14	Black heat shrink tube	Pb	BL	/	PASS
		Cd	BL	/	
		Hg	BL	/	
		Cr(Cr(VI))	BL	/	
		Br(PBBs&PBDEs)	BL	/	
15	Copper wire	Pb	BL	/	PASS
		Cd	BL	/	
		Hg	BL	/	
		Cr(Cr(VI))	BL	/	
		Br(PBBs&PBDEs)	/	/	
16	Magnet core	Pb	BL	/	PASS
		Cd	BL	/	
		Hg	BL	/	
		Cr(Cr(VI))	BL	/	
		Br(PBBs&PBDEs)	BL	/	
17	Silver spring	Pb	BL	/	PASS
		Cd	BL	/	
		Hg	BL	/	
		Cr(Cr(VI))	BL	/	
		Br(PBBs&PBDEs)	/	/	
18	Copper spring	Pb	BL	/	PASS
		Cd	BL	/	
		Hg	BL	/	
		Cr(Cr(VI))	BL	/	
		Br(PBBs&PBDEs)	/	/	
19	Screw	Pb	BL	/	PASS
		Cd	BL	/	
		Hg	BL	/	
		Cr(Cr(VI))	BL	/	
		Br(PBBs&PBDEs)	/	/	
20	Black plastic	Pb	BL	/	PASS
		Cd	BL	/	
		Hg	BL	/	
		Cr(Cr(VI))	BL	/	
		Br(PBBs&PBDEs)	BL	/	

Lab: Shenzhen BCTC Testing Co., Ltd.

Add: BCTC Building & 1-2F, East of B Building, pengzhou Industrial, Fuyuan 1st Road,
Qiaotou Community, Fuyong Street, Bao'an District, Shenzhen, China

Tel : (86) 0755-33229357 Fax : 0755-33229357


Hotline
400-788-9558
www.bctc-lab.com.cn

Test Report

No. BCTC-FYC170071329R

Date: Jul. 25, 2017

Page 6 of 15

21	Tin solder	Pb	BL	/	PASS
		Cd	BL	/	
		Hg	BL	/	
		Cr(Cr(VI))	BL	/	
		Br(PBBs&PBDEs)	/	/	
22	PCB	Pb	BL	/	PASS
		Cd	BL	/	
		Hg	BL	/	
		Cr(Cr(VI))	BL	/	
		Br(PBBs&PBDEs)	39643	N.D.	
23	Silver metal	Pb	BL	/	PASS
		Cd	BL	/	
		Hg	BL	/	
		Cr(Cr(VI))	BL	/	
		Br(PBBs&PBDEs)	/	/	
24	Black plastic	Pb	BL	/	PASS
		Cd	BL	/	
		Hg	BL	/	
		Cr(Cr(VI))	BL	/	
		Br(PBBs&PBDEs)	BL	/	
25	SMD capacitor	Pb	BL	/	PASS
		Cd	BL	/	
		Hg	BL	/	
		Cr(Cr(VI))	BL	/	
		Br(PBBs&PBDEs)	BL	/	
26	SMD LED	Pb	BL	/	PASS
		Cd	BL	/	
		Hg	BL	/	
		Cr(Cr(VI))	BL	/	
		Br(PBBs&PBDEs)	BL	/	
27	SMD resistor	Pb	BL	/	PASS
		Cd	BL	/	
		Hg	BL	/	
		Cr(Cr(VI))	BL	/	
		Br(PBBs&PBDEs)	BL	/	

Lab: Shenzhen BCTC Testing Co., Ltd.

Add: BCTC Building & 1-2F, East of B Building, pengzhou Industrial, Fuyuan 1st Road,
Qiaotou Community, Fuyong Street, Bao'an District, Shenzhen, China

Tel : (86) 0755-33229357 Fax : 0755-33229357


Hotline
400-788-9558
www.bctc-lab.com.cn

Test Report

No. BCTC-FYC170071329R

Date: Jul. 25, 2017

Page 7 of 15

28	SMD audion	Pb	BL	/	PASS
		Cd	BL	/	
		Hg	BL	/	
		Cr(Cr(VI))	BL	/	
		Br(PBBs&PBDEs)	BL	/	
29	IC	Pb	BL	/	PASS
		Cd	BL	/	
		Hg	BL	/	
		Cr(Cr(VI))	BL	/	
		Br(PBBs&PBDEs)	BL	/	
30	Crystal	Pb	BL	/	PASS
		Cd	BL	/	
		Hg	BL	/	
		Cr(Cr(VI))	BL	/	
		Br(PBBs&PBDEs)	BL	/	
31	Glass diode	Pb	210783*	/	PASS
		Cd	BL	/	
		Hg	BL	/	
		Cr(Cr(VI))	BL	/	
		Br(PBBs&PBDEs)	BL	/	
32	Silver metal	Pb	BL	/	PASS
		Cd	BL	/	
		Hg	BL	/	
		Cr(Cr(VI))	BL	/	
		Br(PBBs&PBDEs)	/	/	

Note:

-MDL = Method Detection Limit

-N.D. = Not Detected (<MDL)

-mg/kg = ppm = parts per million

-Negative = Absence of Cr(VI) , the detected Cr(VI) concentration in the boiling water extraction solution is less than 0.02 mg/kg with 50cm² sample surface area used.

-Positive = Presence of Cr(VI), the detected Cr(VI) concentration in the boiling water extraction solution is equal to or greater than 0.02 mg/kg with 50cm² sample surface area used.

-*=According to the directive(2011/65 / EU),Lead is exempted in the electronic appliances and parts in glass or ceramic.

Lab:Shenzhen BCTC Testing Co.,Ltd.
Add:BCTC Building & 1-2F,East of B Building,pengzhou Industrial, Fuyuan 1st Road, Qiaotou Community, Fuyong Street , Bao ' an District, Shenzhen, China
Tel : (86) 0755-33229357 Fax : 0755-33229357

Hotline
400-788-9558
www.bctc-lab.com.cn

Test Report

No. BCTC-FYC170071329R

Date: Jul. 25, 2017

Page 8 of 15

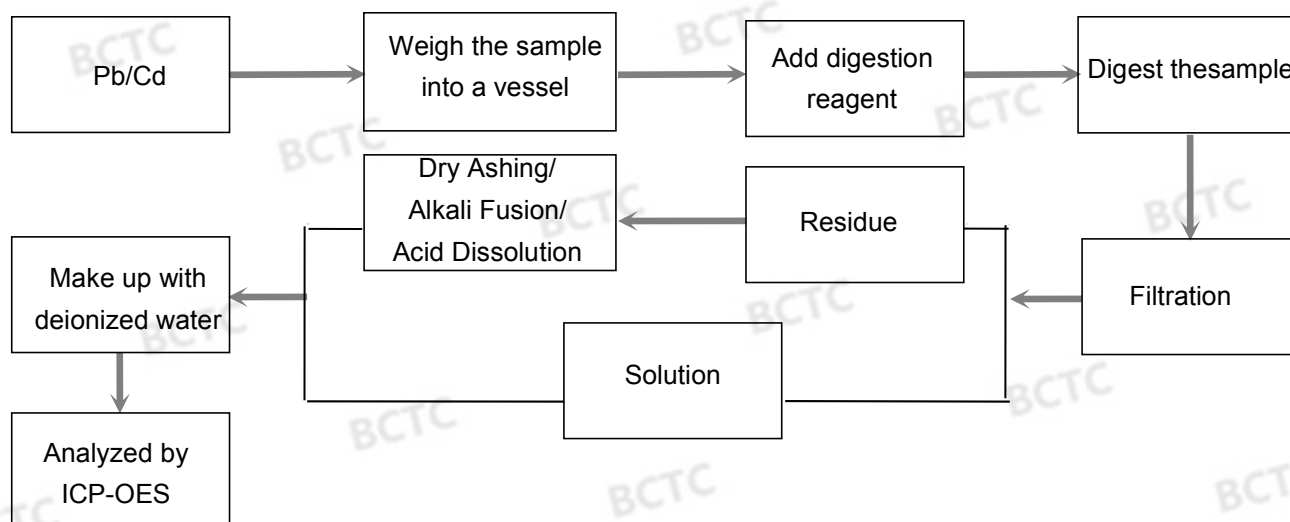
Remark:

- The screening results are only used for reference.
- When conducting the test for PBBs&PBDEs, XRF was introduced to screen Br Exclusively; When conducting the test for Hexavalent Chromium, XRF was introduced to screen Chromium exclusively.

Test Process:

The sample(s) had been dissolved totally tested for Lead, Cadmium, Mercury.

◆ IEC 62321-5:2013 Ed.1.0



Lab: Shenzhen BCTC Testing Co., Ltd.

Add: BCTC Building & 1-2F, East of B Building, pengzhou Industrial, Fuyuan 1st Road, Qiaotou Community, Fuyong Street, Bao'an District, Shenzhen, China

Tel: (86) 0755-33229357 Fax: 0755-33229357



Hotline

400-788-9558

www.bctc-lab.com.cn

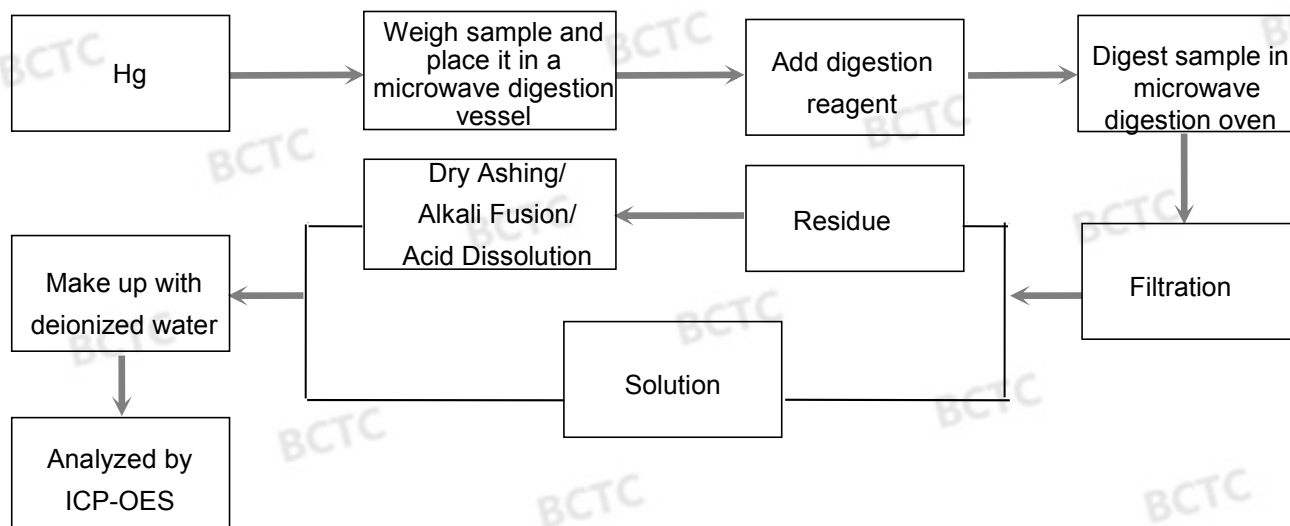
Test Report

No. BCTC-FYC170071329R

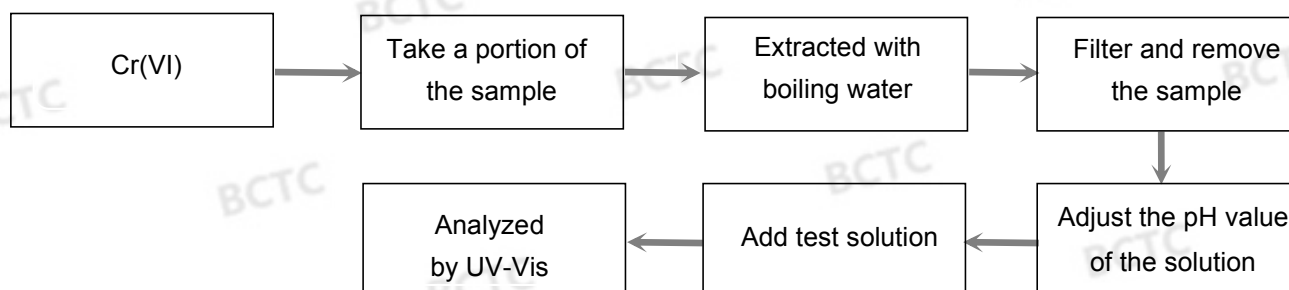
Date: Jul. 25, 2017

Page 9 of 15

◆IEC 62321-4:2013 Ed.1.0



◆IEC 62321-7-1:2015 Ed.1.0



Lab: Shenzhen BCTC Testing Co., Ltd.

Add: BCTC Building & 1-2F, East of B Building, pengzhou Industrial, Fuyuan 1st Road, Qiaotou Community, Fuyong Street, Bao'an District, Shenzhen, China

Tel : (86) 0755-33229357 Fax : 0755-33229357



Hotline

400-788-9558

www.bctc-lab.com.cn

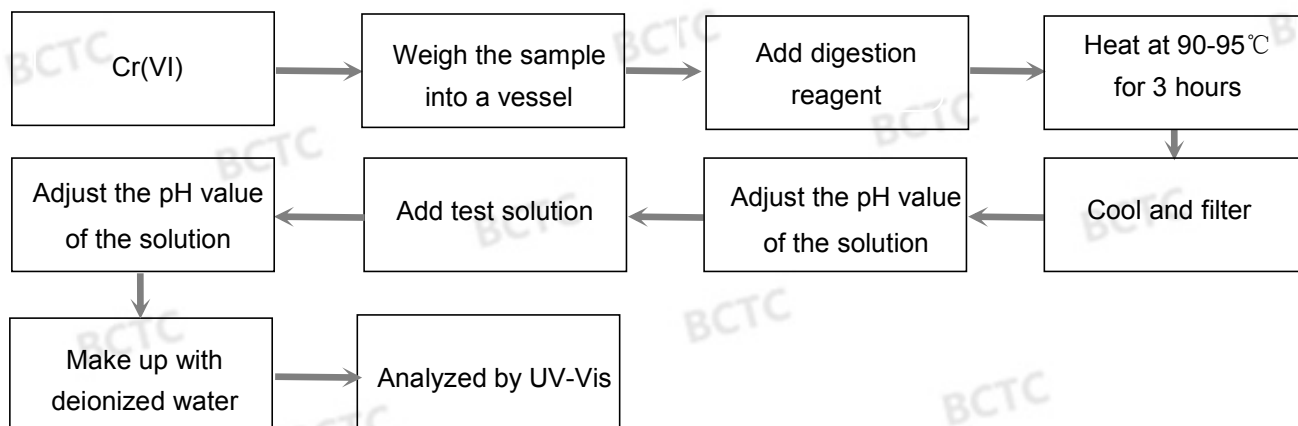
Test Report

No. BCTC-FYC170071329R

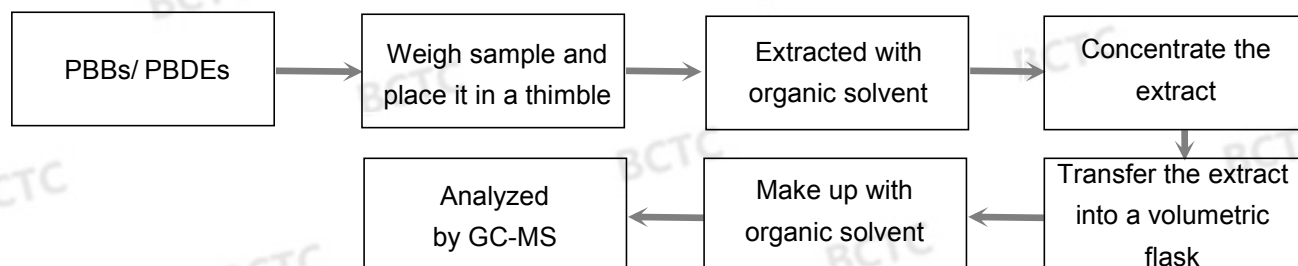
Date: Jul. 25, 2017

Page 10 of 15

◆IEC 62321-7-2:2017 Ed.1.0



◆IEC 62321-6:2015 Ed.1.0



Test Report

No. BCTC-FYC170071329R

Date: Jul. 25, 2017

Page 11 of 15

Photograph of Sample



Fig. 1



Fig. 2

Lab: Shenzhen BCTC Testing Co., Ltd.

Add: BCTC Building & 1-2F, East of B Building, pengzhou Industrial, Fuyuan 1st Road,
Qiaotou Community, Fuyong Street, Bao'an District, Shenzhen, China

Tel: (86) 0755-33229357 Fax: 0755-33229357



Hotline

400-788-9558

www.bctc-lab.com.cn

Test Report

No. BCTC-FYC170071329R

Date: Jul. 25, 2017

Page 12 of 15

Photo(s) of the tested component(s)

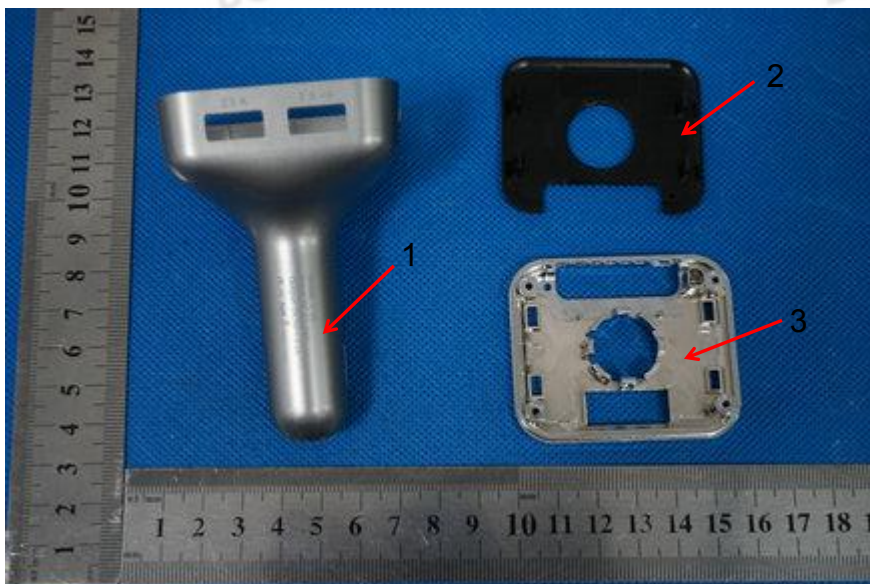


Fig. 3

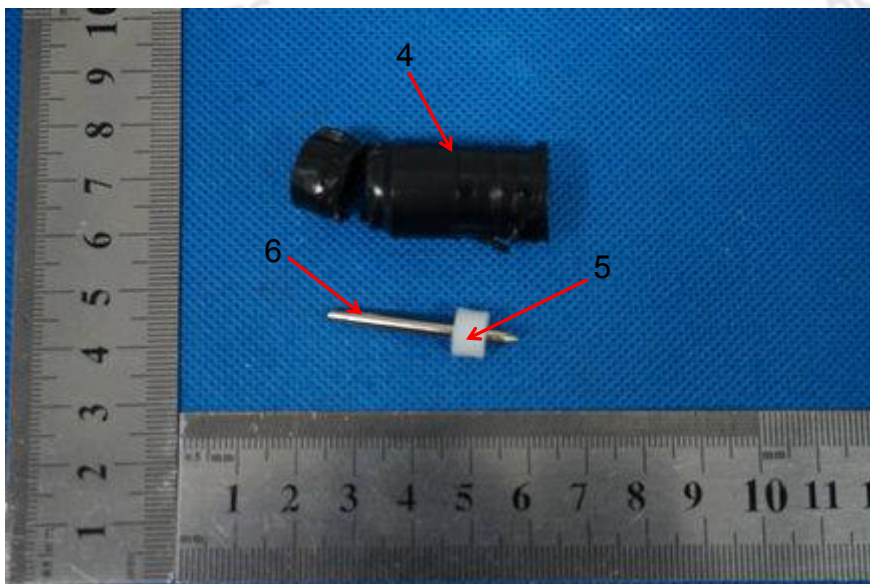


Fig. 4

Lab: Shenzhen BCTC Testing Co., Ltd.

Add: BCTC Building & 1-2F, East of B Building, pengzhou Industrial, Fuyuan 1st Road,
Qiaotou Community, Fuyong Street, Bao'an District, Shenzhen, China

Tel: (86) 0755-33229357 Fax: 0755-33229357



Hotline
400-788-9558
www.bctc-lab.com.cn

Test Report

No. BCTC-FYC170071329R

Date: Jul. 25, 2017

Page 13 of 15

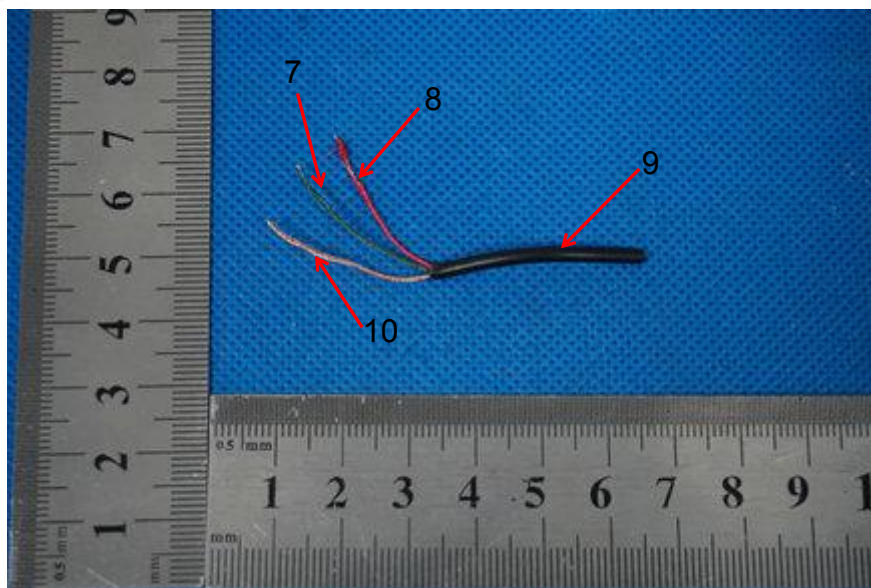


Fig. 5

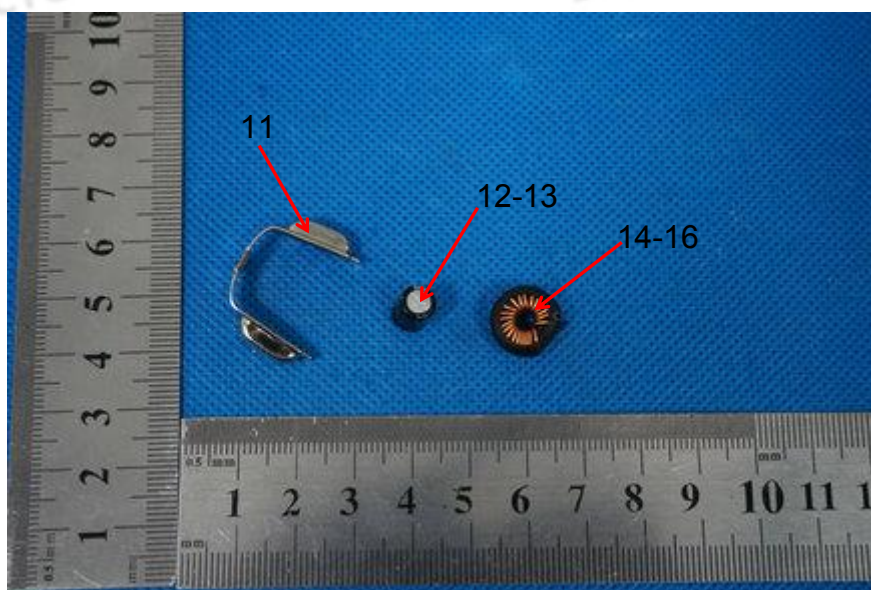



Fig. 6

Lab: Shenzhen BCTC Testing Co., Ltd.

Add: BCTC Building & 1-2F, East of B Building, pengzhou Industrial, Fuyuan 1st Road,
Qiaotou Community, Fuyong Street, Bao'an District, Shenzhen, China

Tel : (86) 0755-33229357 Fax : 0755-33229357

 **Hotline**
400-788-9558
www.bctc-lab.com.cn

Test Report

No. BCTC-FYC170071329R

Date: Jul. 25, 2017

Page 14 of 15

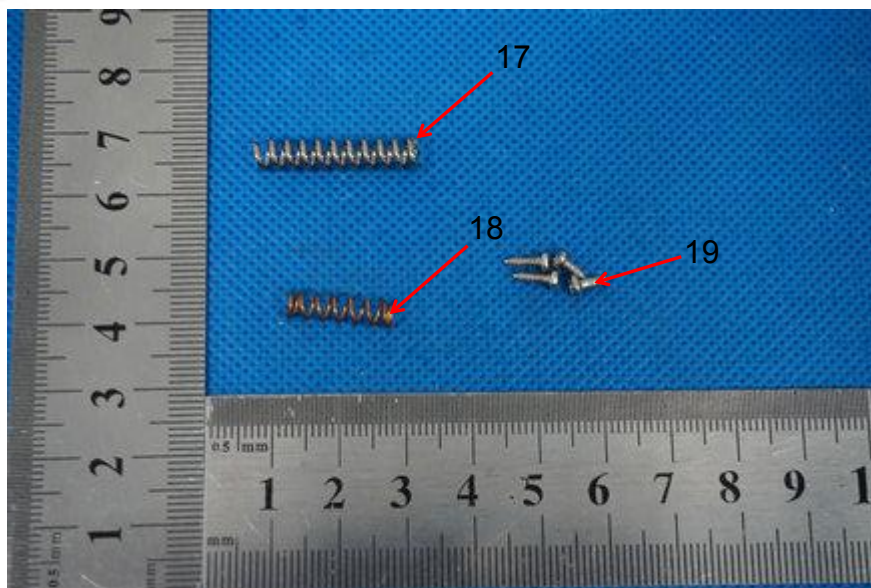


Fig. 7

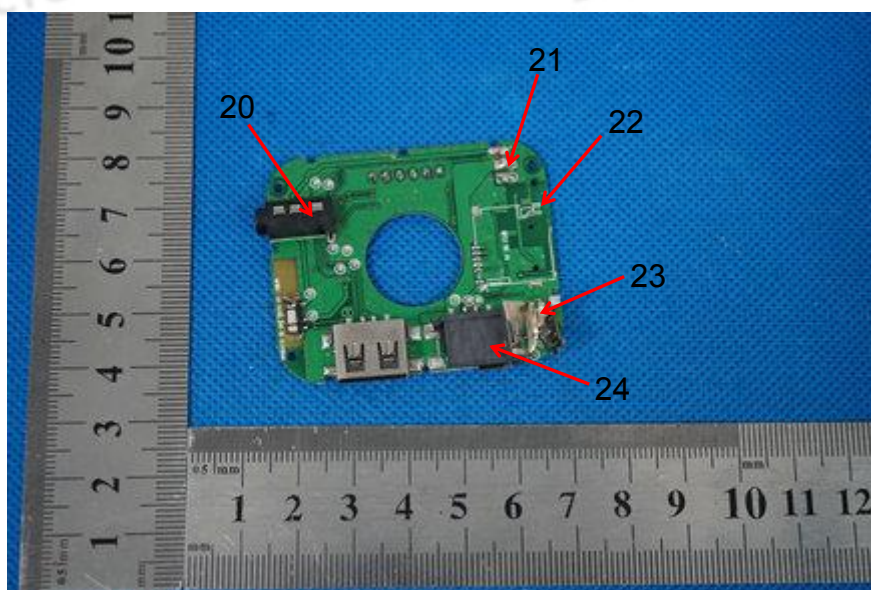



Fig. 8

Lab: Shenzhen BCTC Testing Co., Ltd.

Add: BCTC Building & 1-2F, East of B Building, pengzhou Industrial, Fuyuan 1st Road,
Qiaotou Community, Fuyong Street, Bao'an District, Shenzhen, China

Tel: (86) 0755-33229357 Fax: 0755-33229357

 **Hotline**
400-788-9558
www.bctc-lab.com.cn

Test Report

No. BCTC-FYC170071329R

Date: Jul. 25, 2017

Page 15 of 15

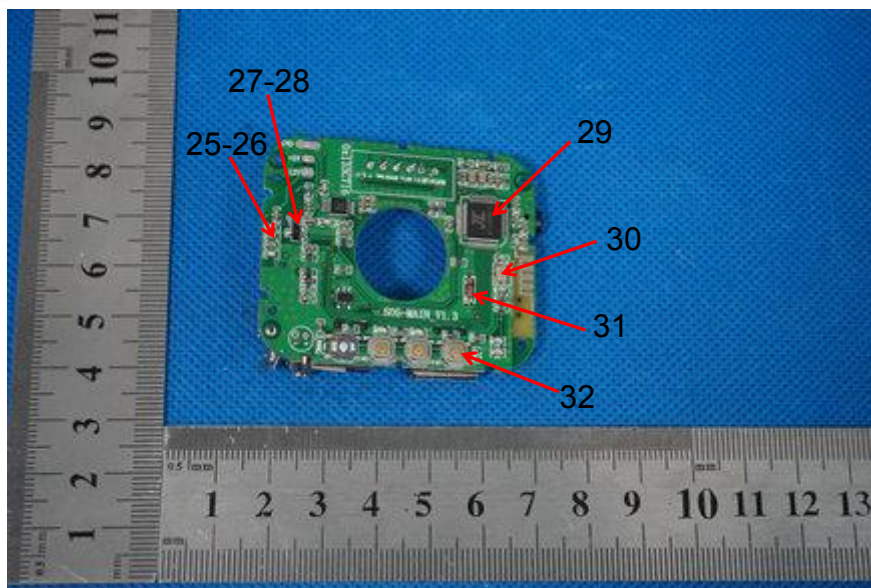


Fig. 9

***** End of Report *****